

SERVICE INFORMATION

M139.0

MODELS AFFECTED: All BevMax 4 CO2 Models
MODEL NUMBERS: DN5800-4C

Date: 4/29/15

RE: BevMax 4 New CO2 Refrigeration Unit Installation



Reason: To provide instructions on removal of existing CO2 Refrigeration System and Installation of new CO2 Refrigeration System.

Order: 65701550 BevMax 4 CO2 Refrigeration Kit Domestic, Wide see list of parts included:

Description	65701550 Domestic BevMax 4 DN5800-4C CO2 Refrigeration Kit	QTY
BevMax 4 CO2 Refrigeration Deck Assy. Domestic	CR0021178	1
Slanted Wide Panel w/ Gasket	CR0007060	1
Foam Tape .39 X 2	D574	4
PVC Tape .187 X 1	CR0012991	22.25
Foam Tape .5”T X 1”W X 66	CR0004801	1
Refrigeration Unit Carton	80541225	1
Package Liner Refrigeration Unit	80541226	1
Wire tie, 7.5”	90190201	2
Permagum	80360113	.12 lb
Domestic Return Tag	80385217	1
Installation Instructions	M139.x	1

Tools Required:

- | | | | |
|-----------------|-----------------------|---------------|--------------|
| Drill | 7/32” drill bit | ¼” socket | 7/16” socket |
| 1/8” drill bit | Phillips screw driver | 3/8” socket | |
| 5/32” drill bit | Wire tie cutter | Socket driver | |

CAUTION: Weight of Refrigeration System is approximately 71 pounds.

SERVICE INFORMATION

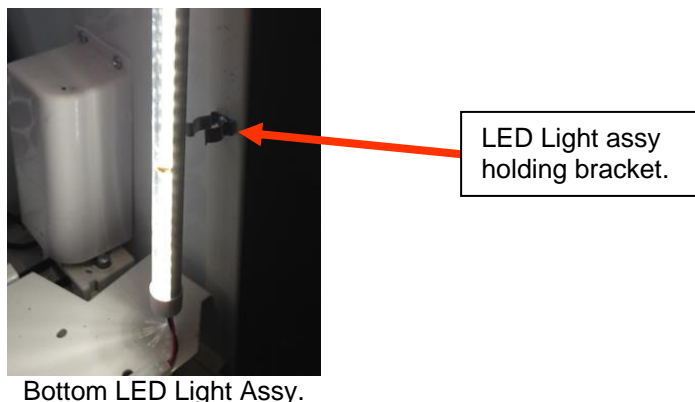
Repair should be performed by a qualified Service Technician.

Removal Instructions – failed CO2 Refrigeration System:

1. Unplug the main power cord to the AC Distribution Box. Also unplug the refrigeration unit cord from the AC Distribution Box and toggle the AC Distribution Box on/off switch to the off position.



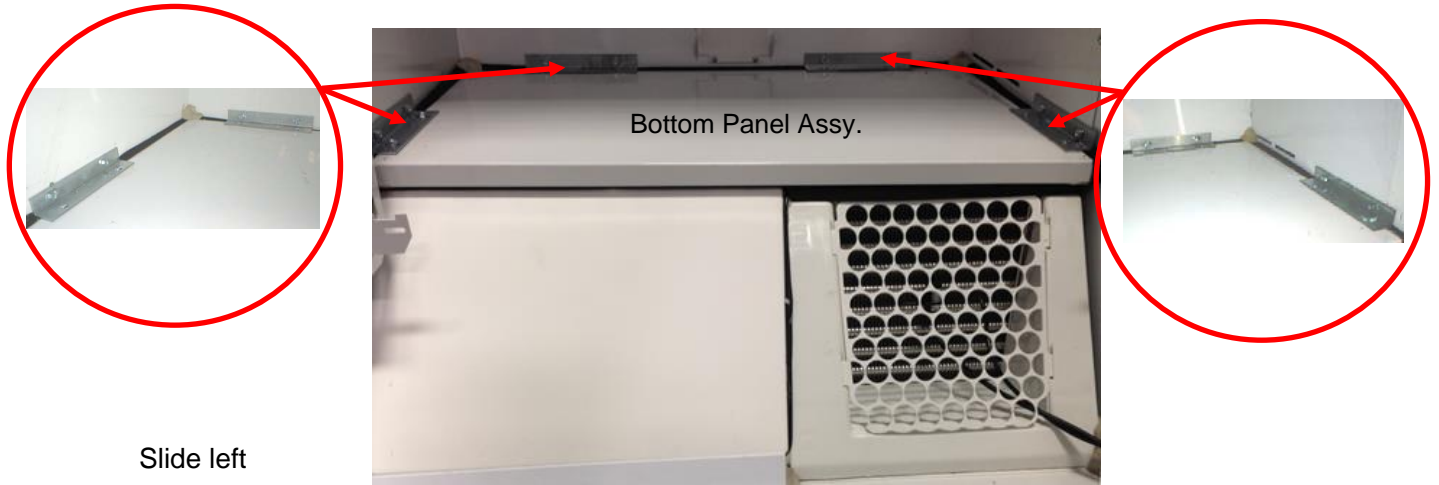
2. Pull the vender from the wall so you may access the back of the vender.
3. Remove the bottom LED light assy. from its two brackets that hold it in position. Move the LED Light assy. out of the way of the shelves.



4. Remove product from the bottom 2 (D & E) trays of the Vender.
5. Tray D & E removal preparation.
 - a. Remove the 2 screws securing the Trays to the Tray Supports.
6. Remove Tray D carefully from the vender.
7. Manually raise the Delivery Cup up to tray C. Remove Tray E carefully from the vender.
8. Note: Save all Permagem during removal. It will be used during install of new Unit.

SERVICE INFORMATION

9. Remove the Bottom Panel Assembly by removing the eight 5/16" screws.



10. Remove the Evaporator Inlet Grill by pulling towards you and the guard will slide from the slots in the foamed panel assy. Be careful not to damage the Temperature Sensor Wire and Defrost Control Bulb.



11. Remove the existing Condenser Cover (Slanted Panel Assy.) by carefully sliding it up and out of vender.



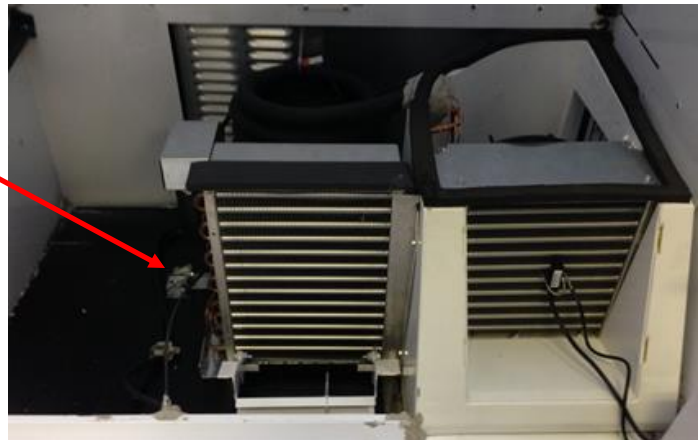
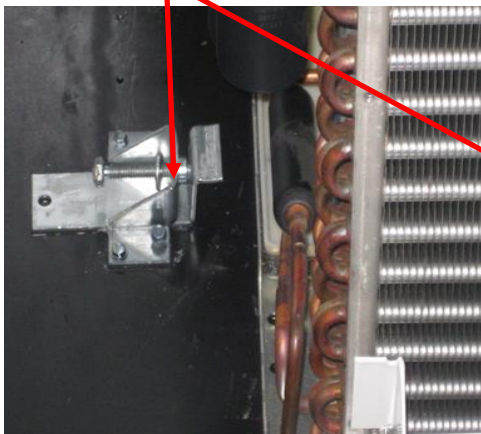
SERVICE INFORMATION

12. Remove the baffle by unscrewing screws at the bottom and in the back (Note: baffle is not in all models).

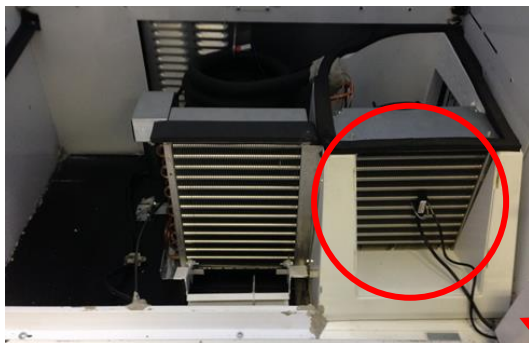


13. Turn the 7/16" bolt in the Refrigeration Deck Clamp counterclockwise until it fully disengages the Refrigeration System from the Cabinet Wall.

Refrigeration tie down bolt.



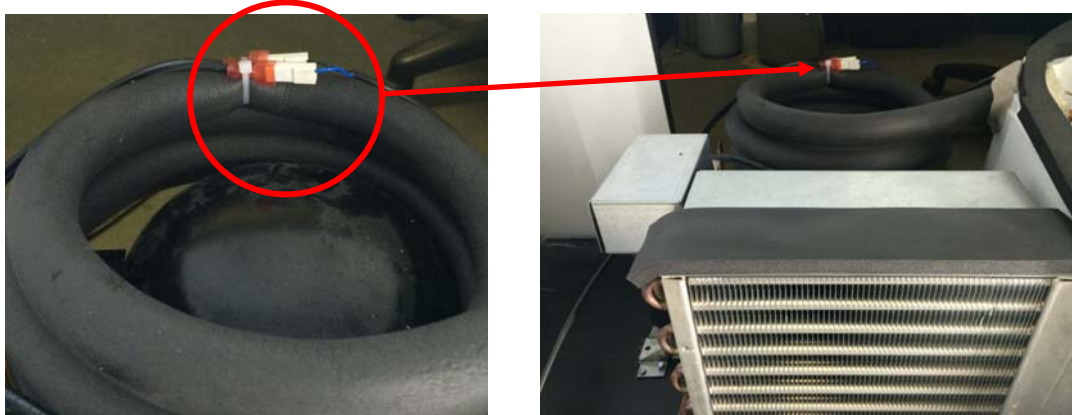
14. Carefully remove the Temperature Sensor and Defrost Control Bulb from the Evaporator and lay them out of the way so they will not get damaged when the Refrigeration system is removed.



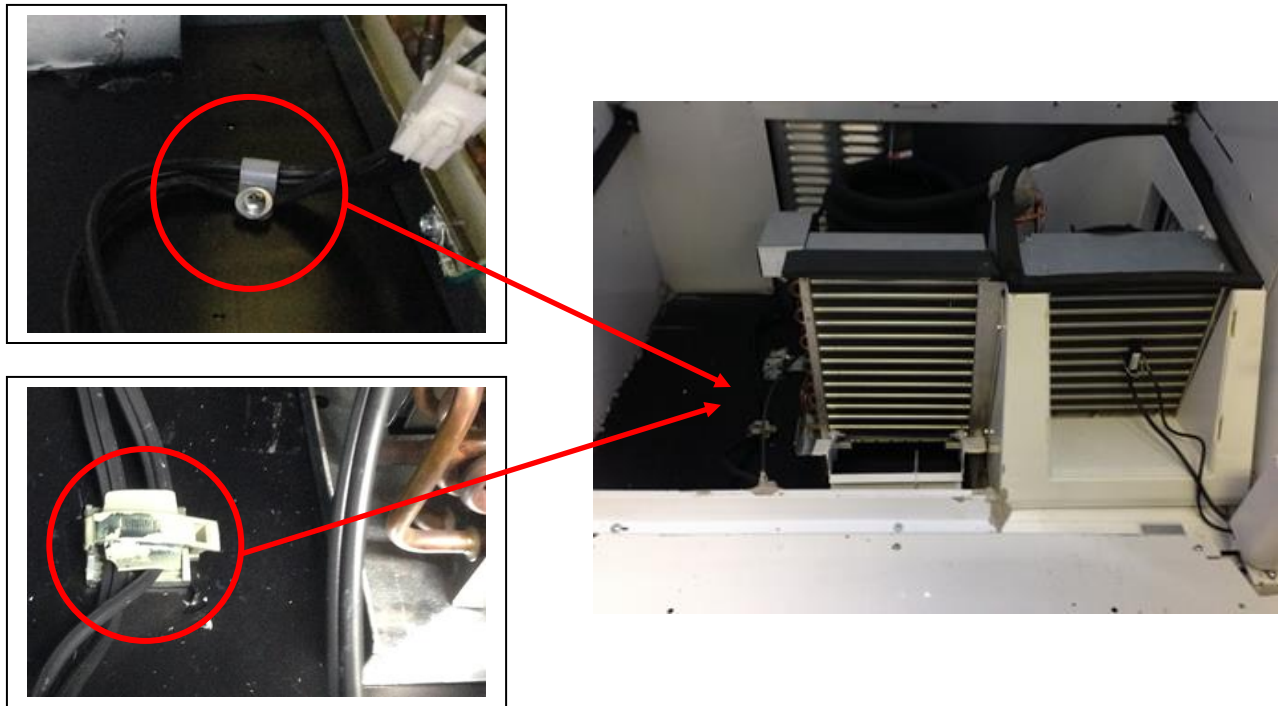
Note: The X motor does not have to be removed

SERVICE INFORMATION

15. Cut the wire tie and unplug the evaporator power leads.



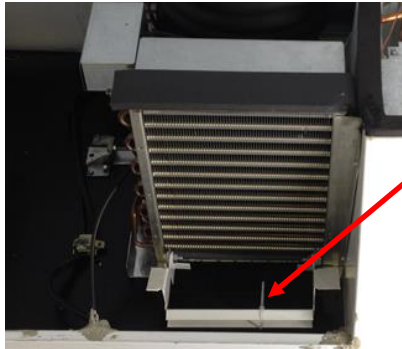
16. Remove the 2 clamps securing the Compressor Power lead to the base plate.



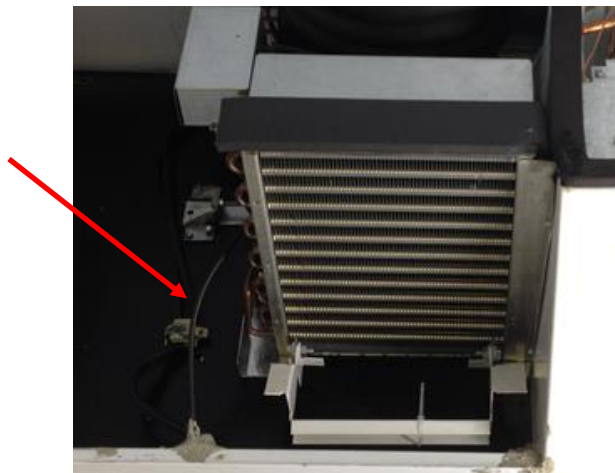
17. Unplug the compressor power connector.

SERVICE INFORMATION

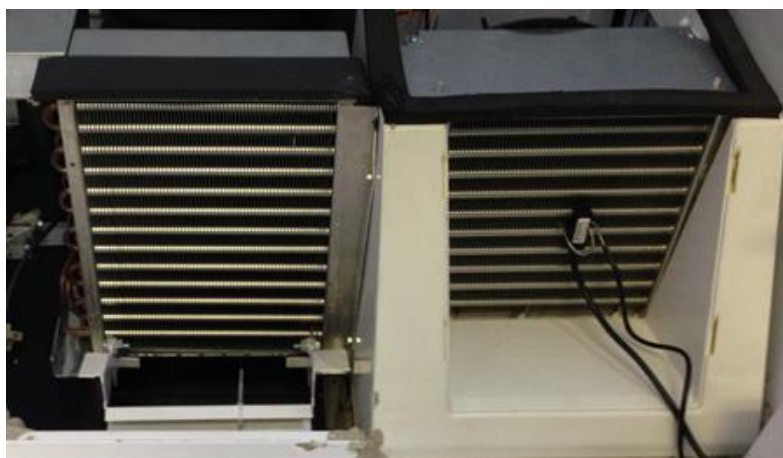
18. Cut the wire tie from the Refrigeration Unit handle used to remove the system from the vender.



19. Make sure harnesses are out of the way before removing the system.

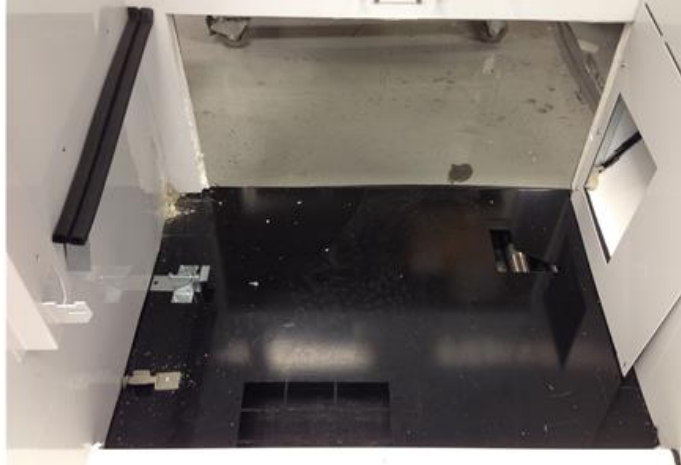


20. Carefully remove the Refrigeration Unit from the vender.
Caution: The Refrigeration Unit weighs approximately 71 pounds.



SERVICE INFORMATION

21. System removed from cabinet.

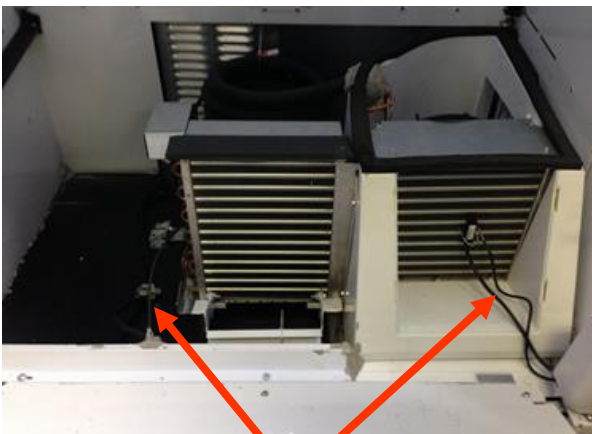


22. Take the existing Bottom Panel Assembly removed earlier and carefully remove all gasket from the sides and back edges. Note: you will need to use some type of adhesive remover to remove the old tape. This step is critical before installing the new gasket to ensure the panel seals to cabinet to prevent Condensation issues.

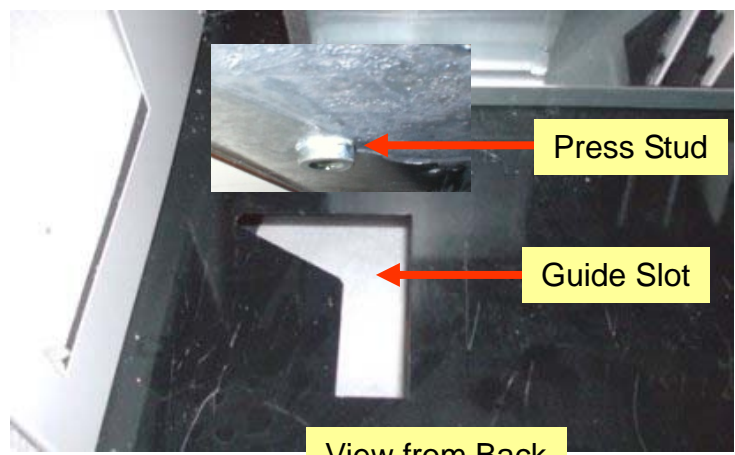
23. Carefully inspect all gaskets on the new Refrigeration System. Replace any that are damaged to prevent Condensation issues.

Installation Instructions for CO2 Refrigeration Unit:

24. Place new CO2 Refrigeration Unit on base of Vender. Caution: New CO2 Refrigeration Unit weighs approximately 71 pounds. Slide system in. Ensure press pin on bottom of system will line up with the guide slot in base plate.



Make sure all wires are out of the way before sliding system in.



Press Stud

Guide Slot

View from Back

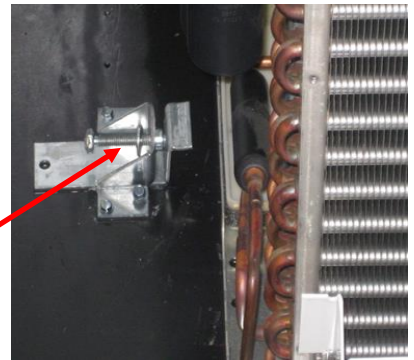
SERVICE INFORMATION

25. The slot assists the system in pushing left and forward to obtain the seal needed.

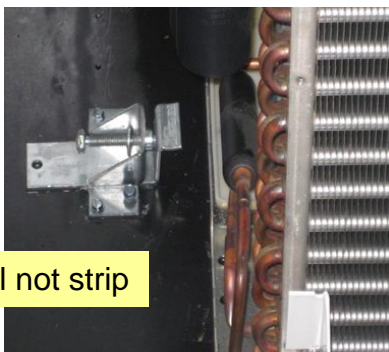


Press stud

Press Stud on bottom of system helps guide the system over to the left as the bolt is tightened.



26. Turn the 7/16 refrigeration bolt clockwise to engage the refrigeration plate and securely tighten. It is critical to tighten the bolt so Gaskets are engaged and sealing against the side wall.

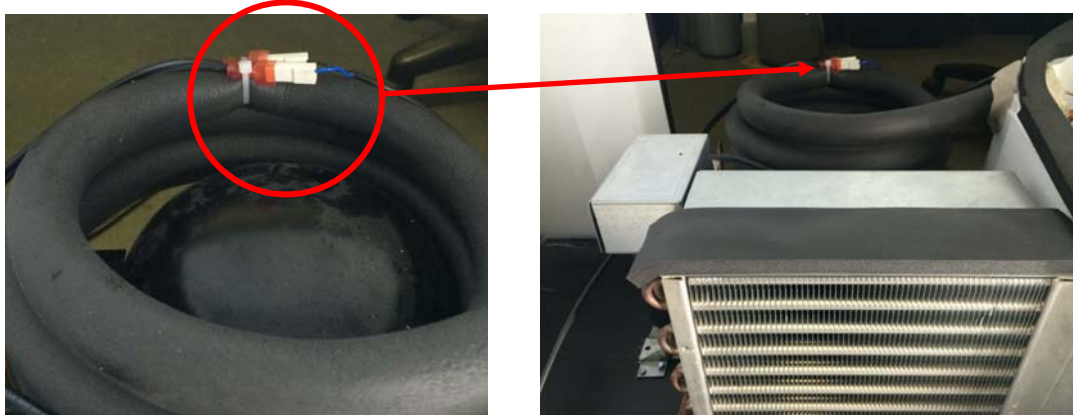


Bolt will not strip

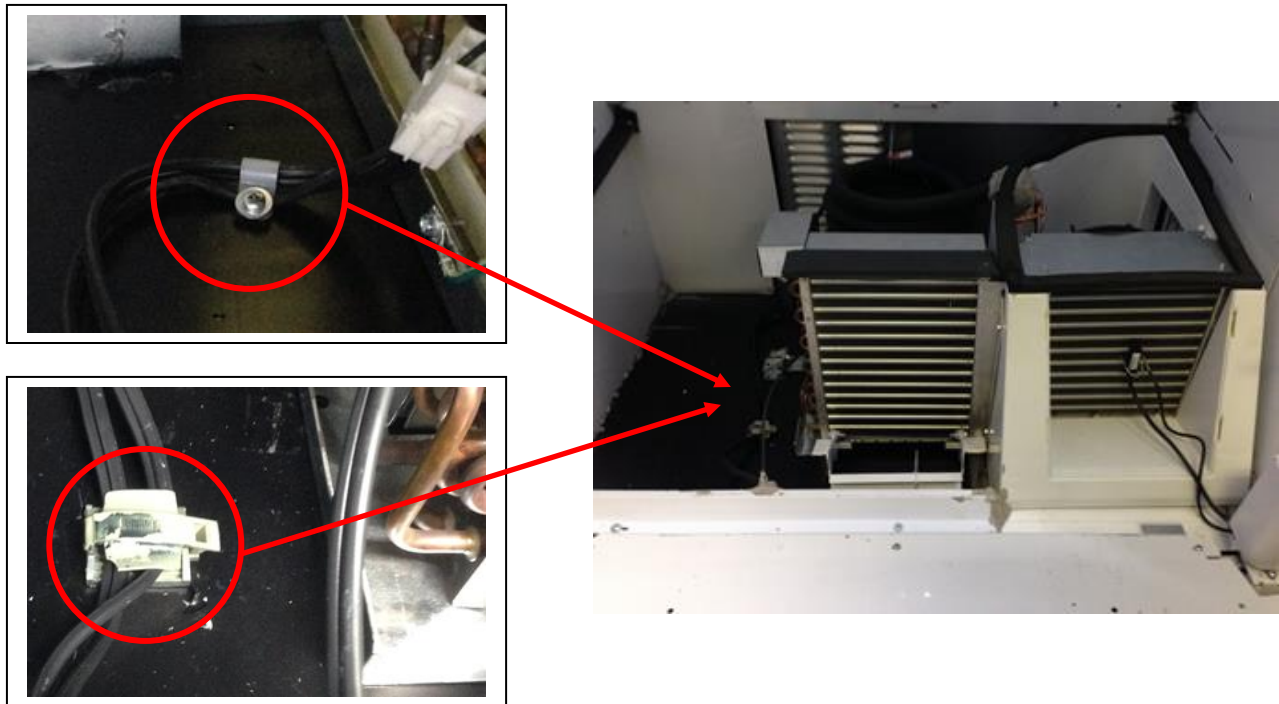


SERVICE INFORMATION

27. Connect and secure the evaporator power leads as shown. This keeps the wires away from the condenser fan motor blade.



28. Plug in the compressor power wire and secure wire with the 2 clamps that were removed earlier.

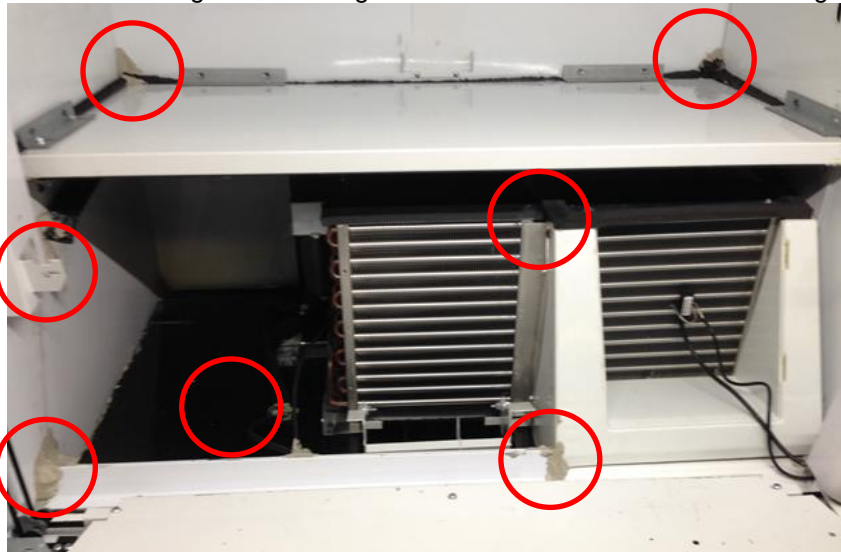


SERVICE INFORMATION

29. Install the baffle if removed earlier.



30. Route Refrigeration Wiring in Wire Chase and under the front edge of plastic evaporator box.



Route wiring under front edge of evaporator box and under wire chase as shown.

Install Permagem around harness and fill hole in wire chase.

Install Permagem before installing condenser cover and bottom panel assembly. Permagem is critical to the seal of the system.

31. Carefully install the Temperature Sensor and Defrost Control Bulb removed earlier from the Evaporator.



SERVICE INFORMATION

32. Install the condenser cover by sliding it down in the track.



33. Permagem hole in service area where wires go through to service area. Install Permagem in the locations shown.



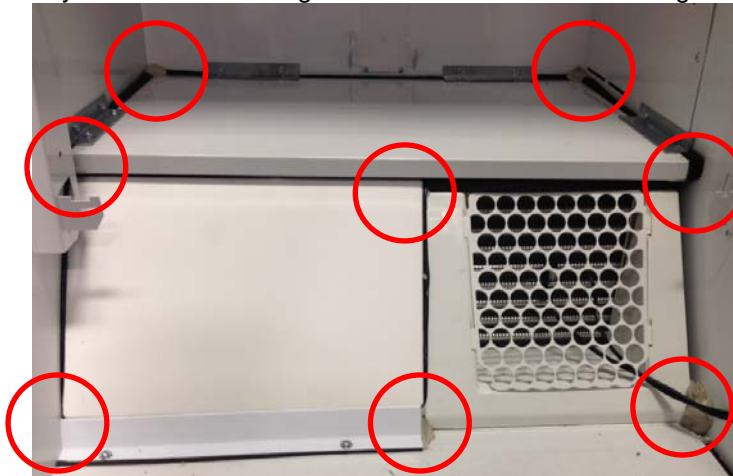
PERMAGUM IS CRITICAL TO THE SEAL OF THE SYSTEM

34. Install evaporator guard by sliding it in the slot to the right and left.

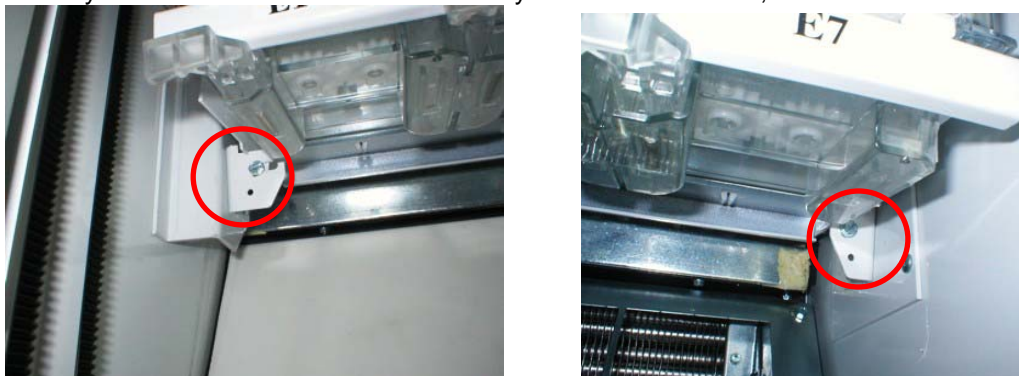


SERVICE INFORMATION

35. Install Bottom Panel Assembly and secure with eight 5/16 bolts. Check all Permagum locations.



36. Install the D & E Trays removed earlier. Secure each tray with two ¼” screws, one each side.



37. Test Vender for proper operation.

- a. Press # 2 on the keypad to scroll to “ Test Modes”
- b. Press # 4 to enter, “Test Vends”.
- c. Press key # 4 display will show “A1”, press key 3 to scroll to E9 then E1.
- d. Pull the left door switch out, with service door open, Press # 4 at the selection you want to test, the cup should go the selection, dispense the product in the delivery cup and then go to the port to delivery it. You must catch the product and insert it in the port by hand to complete the vend cycle.

38. Test vend E1 and E9 to ensure the tray is installed correctly. Repeat for D1 and D9.

39. The CO2 Refrigeration System can be removed from the back of the machine by following the steps 1 thru 19 in addition to removing the back louver panel.